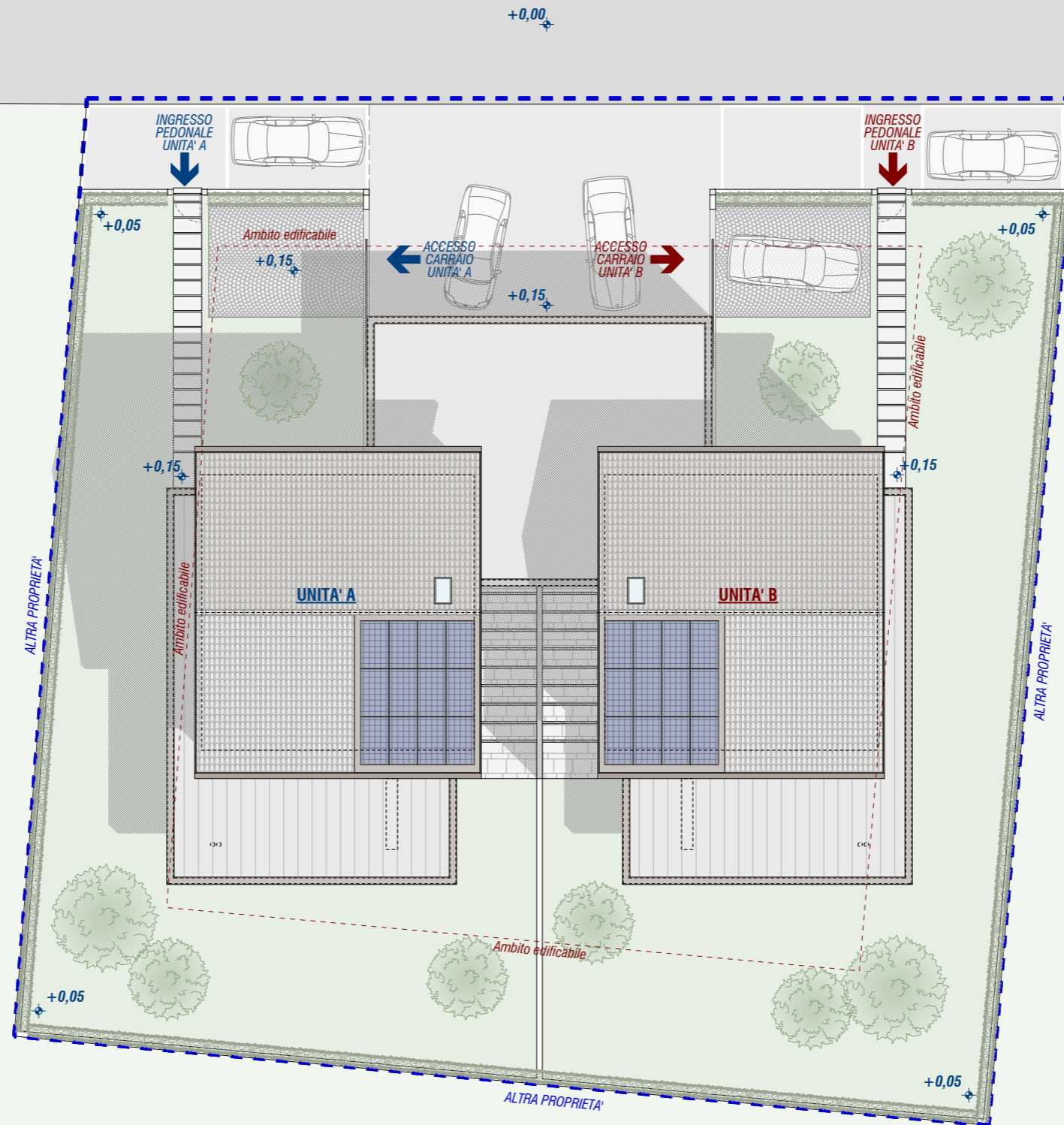
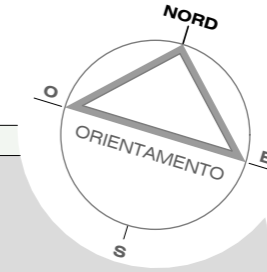


scala 1:200

PLANIMETRIA GENERALE DI PROGETTO
Ambito edificabile - Distanze dai confini - D. Lgs. 102 / 2014

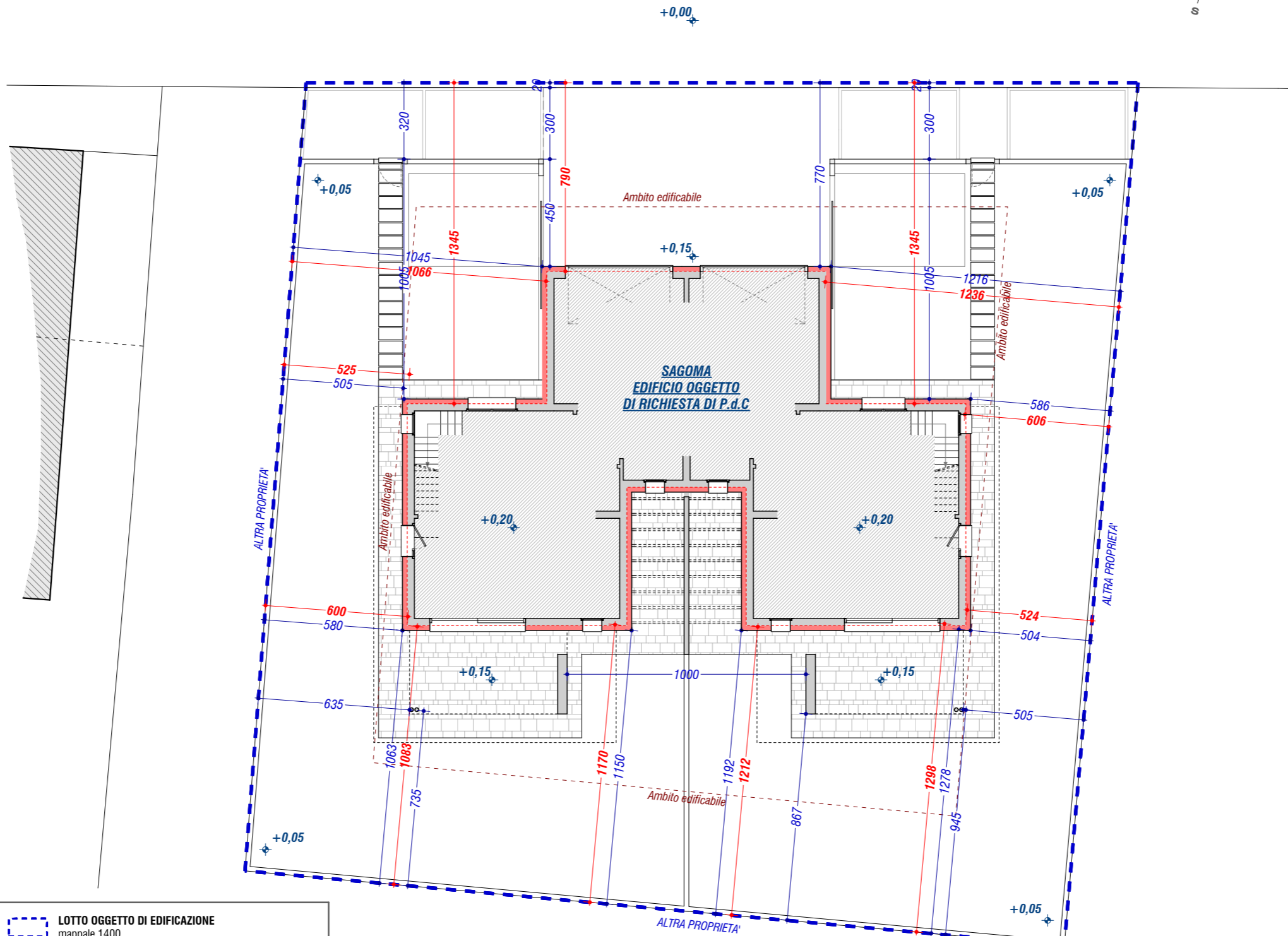
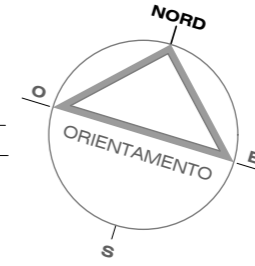
VIA MONSIGNOR NEGRIN



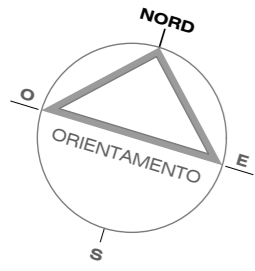
nm Altezze rappresentate riferite alla quota della strada.
Quota pavimento piano terra +0,20 ml
su livello strada

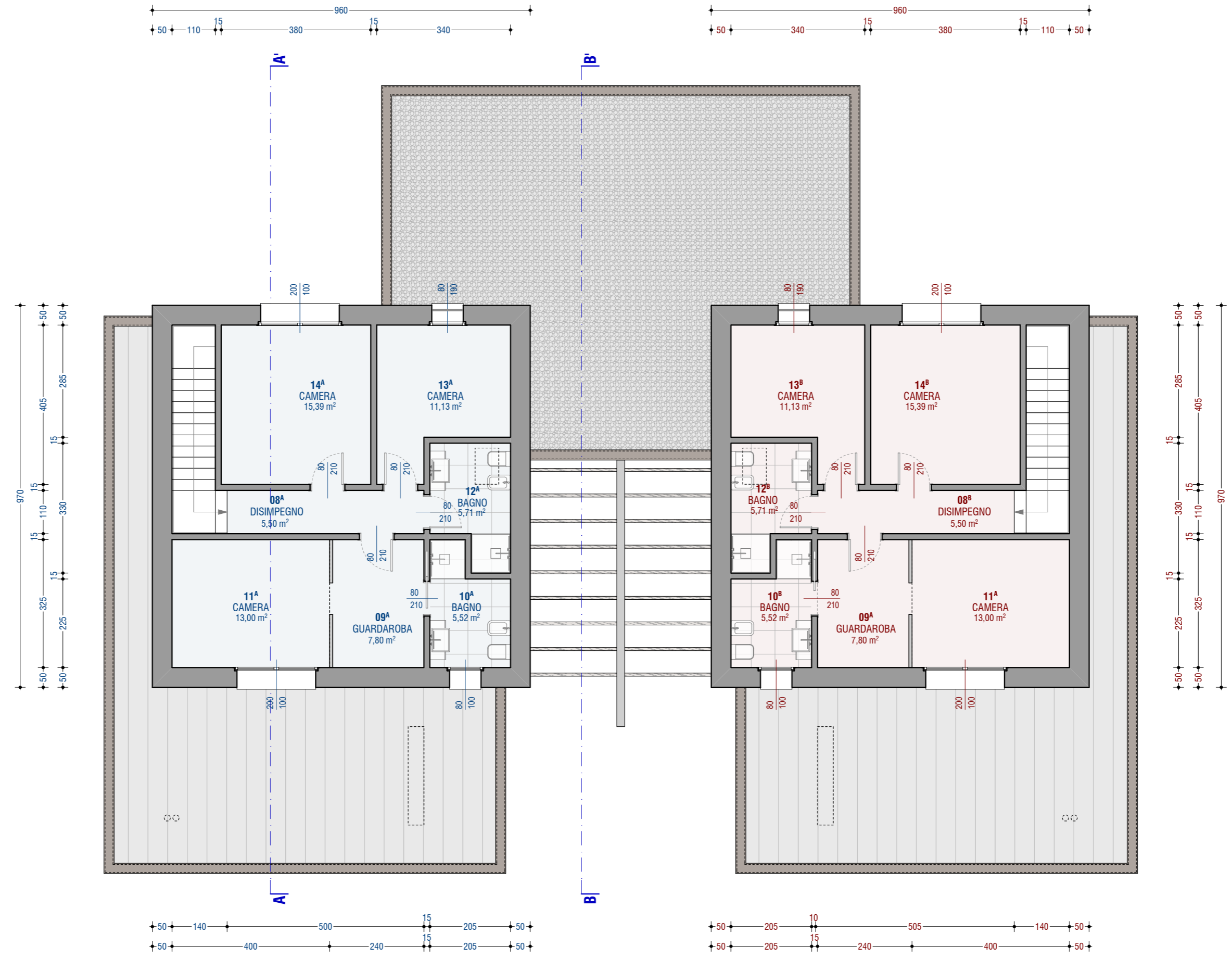
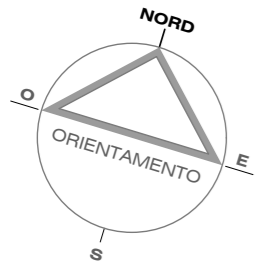
LOTTO OGGETTO DI EDIFICAZIONE
mappale 1400

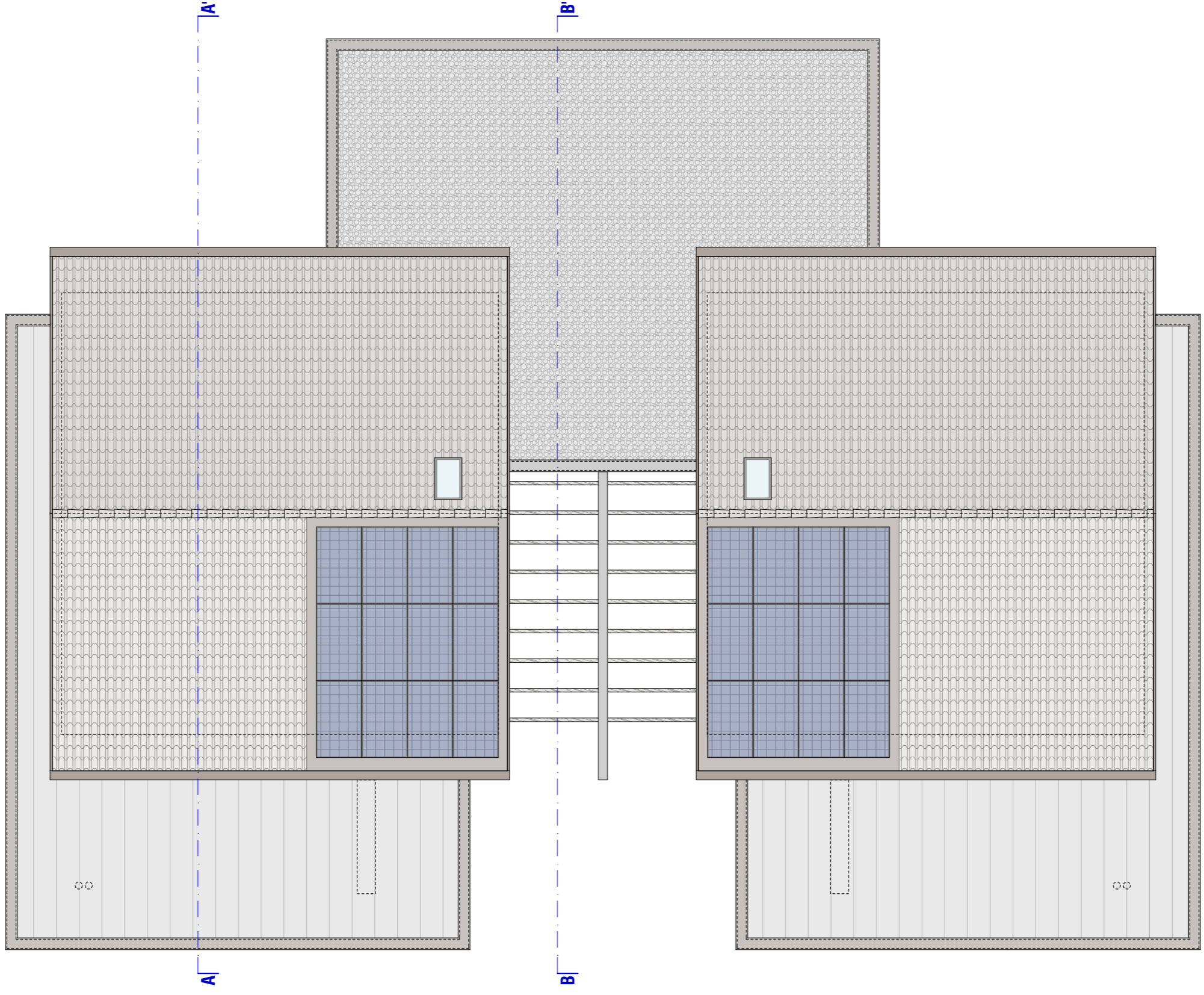
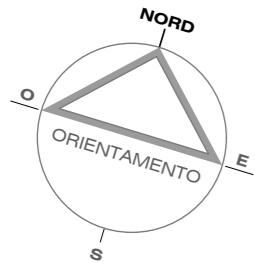
VIA MONSIGNOR NEGRIN

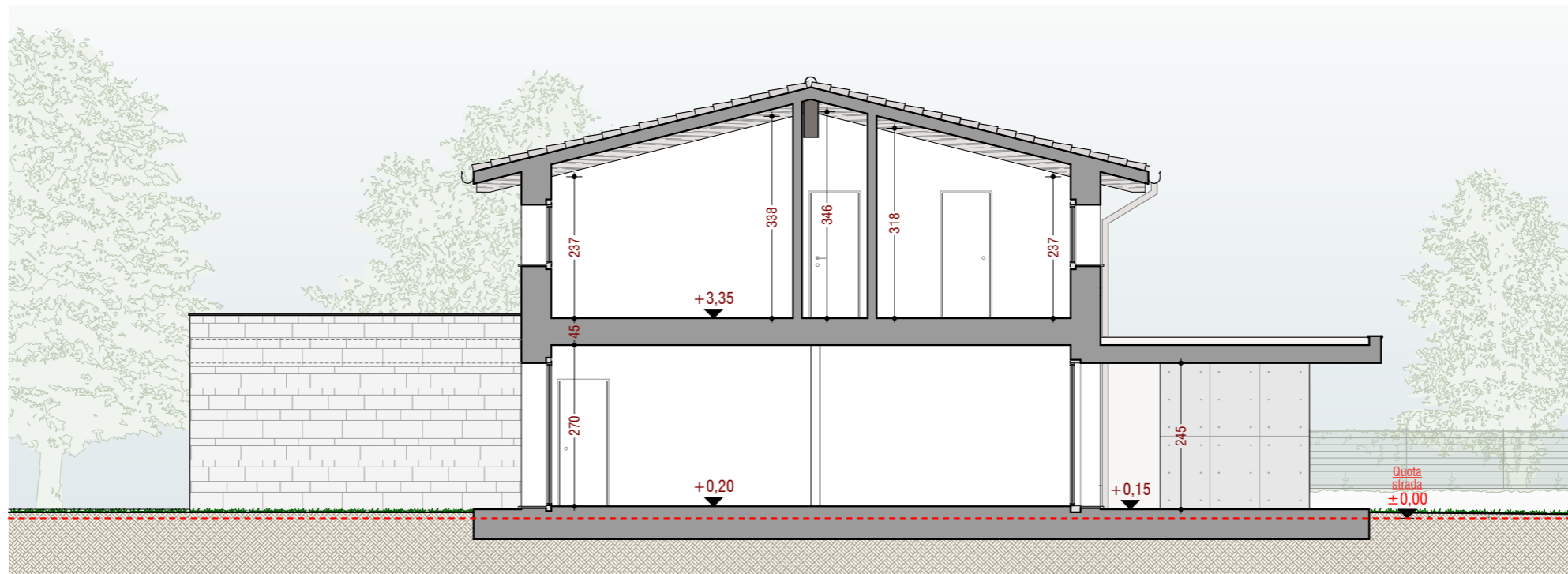


-  LOTTO OGGETTO DI EDIFICAZIONE
mappale 1400
-  AMBITO EDIFICABILE
-  SUP. / VOLUME NON RILEVANTI AI FINI URBANISTICI
(ai sensi del D. Lgs. 102 / 2014 esclusione delle eccedenze oltre i 30 cm sui muri perimetrali)
-  DISTANZE EFFETTIVE DA CONFINE
(da parete esterna)
-  DISTANZE URBANISTICHE DA CONFINE
(ai sensi del D. Lgs. 102 / 2014 esclusione delle eccedenze oltre i 30 cm sui muri perimetrali)



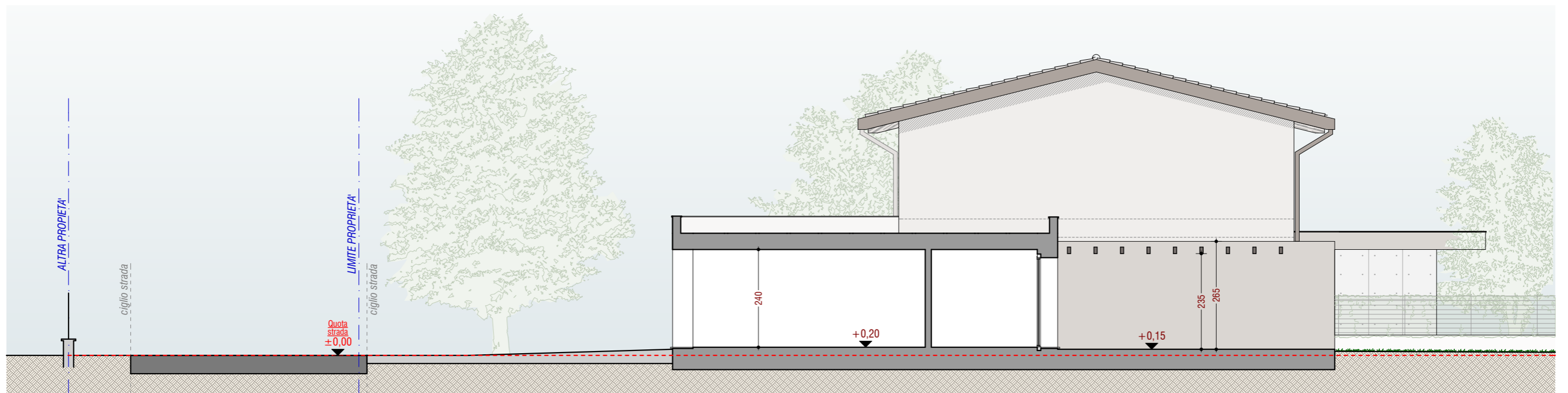






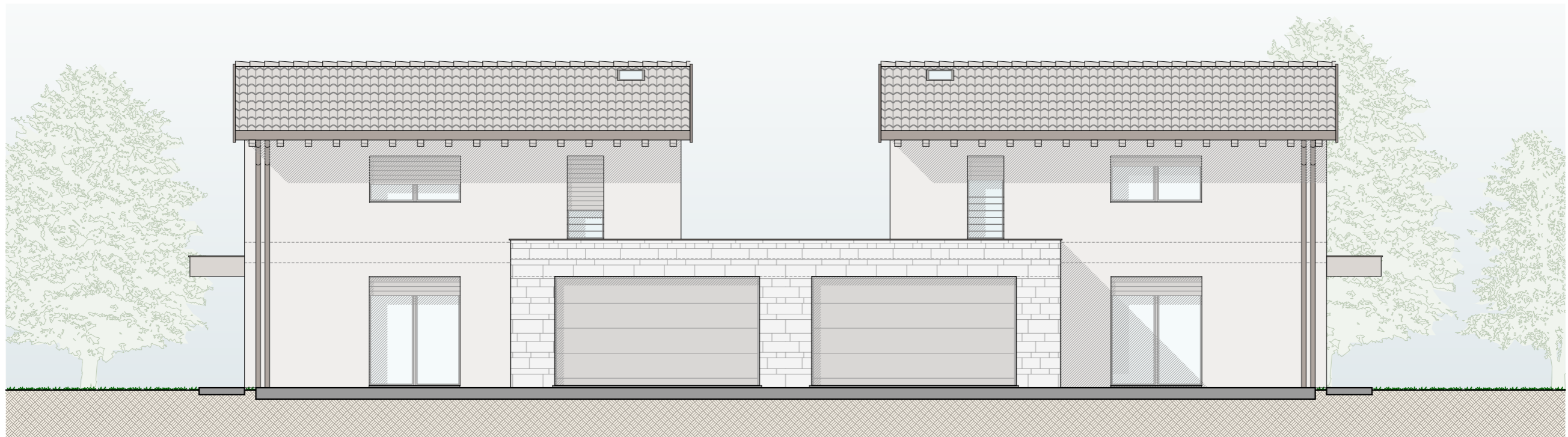
SEZIONE A - A'

scala 1:100



SEZIONE A - A'

scala 1:100



PROSPETTO NORD

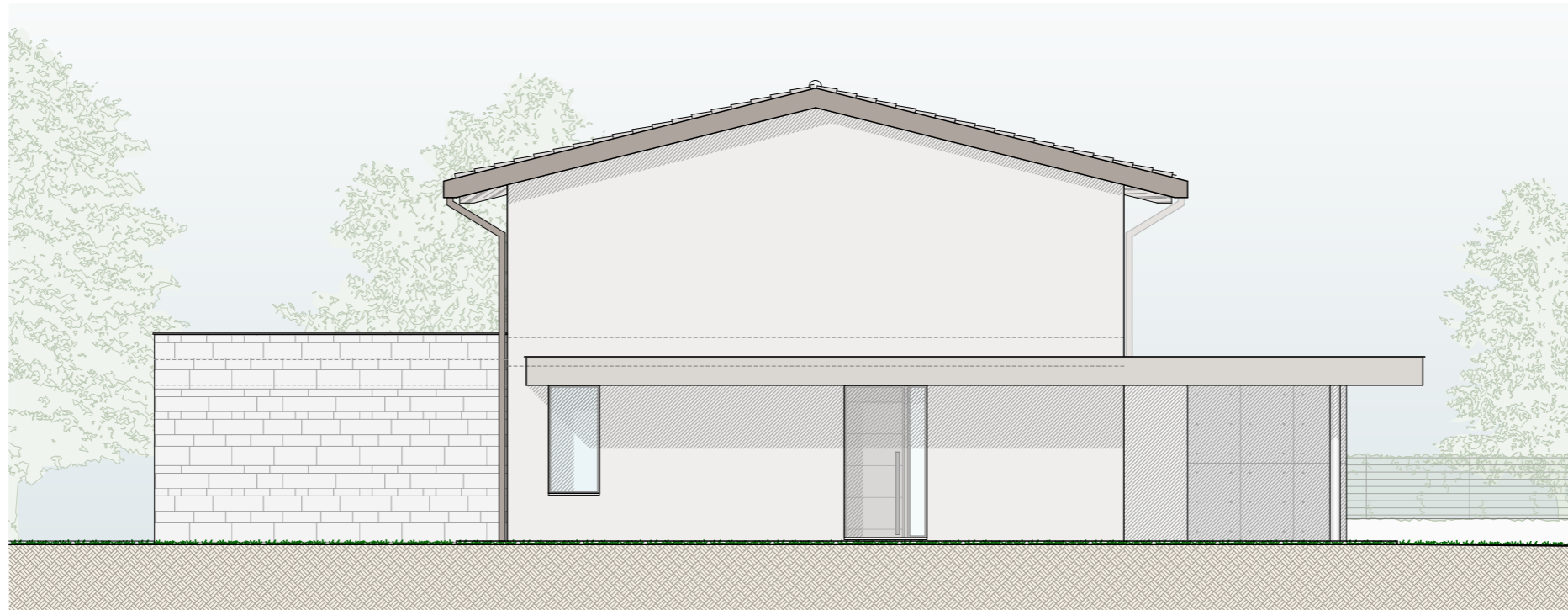
scala 1:100



- Pannelli fotovoltaici
- Vasca pannelli fotovoltaici in alluminio
- Tapparelle in alluminio estruso
- Serramenti in PVC con vetro a doppia camera
- Lattinerie in alluminio verniciato
- Travi di copertura in legno - colore naturale
- Intonachino di finitura ai silicati

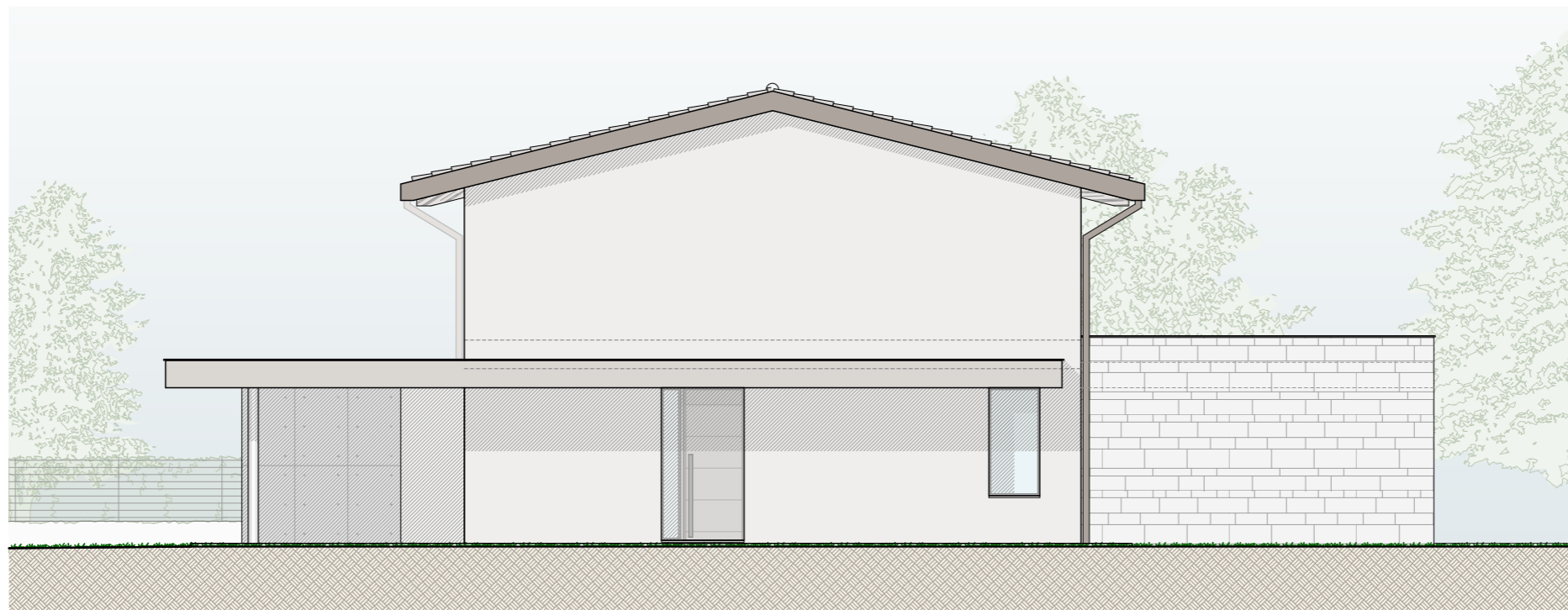
PROSPETTO SUD

scala 1:100



PROSPETTO OVEST

scala 1:100



PROSPETTO EST

scala 1:100